



**kolibri  
systems**

# Kolibri Network Monitoring

The Kolibri Network Monitoring application is the radio network monitoring solution that offers real-time information of the use of your radio network in a user-friendly GUI.



## Three levels of real-time information:

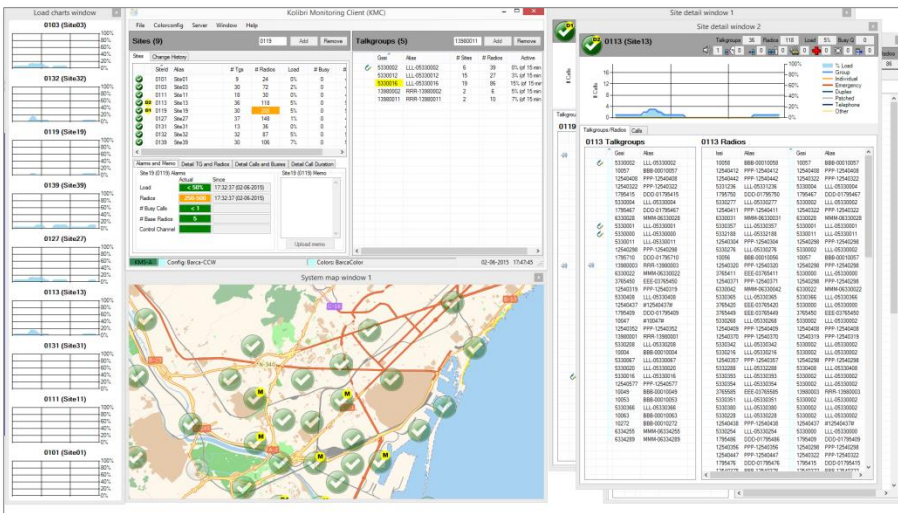
1. General network overview shown on a map.
2. Lists of monitored sites and talkgroups
3. Detailed information per sites and talkgroups

## Features:

- ✓ Map showing site position and alarms
- ✓ Site status (Base radios, online status)
- ✓ Site monitoring (Busy, Load, #Radios)
- ✓ Site usage (expected and forbidden Talkgroups)
- ✓ Site details
- ✓ Talkgroup usage (Sites, load)
- ✓ Talkgroup details
- ✓ Actual calls
- ✓ Call history
- ✓ Patch details

## Options:

- ✓ Sending text messages
- ✓ Disable/Enable radio
- ✓ Historic graphical overview



### Real-time information of selected Sites:

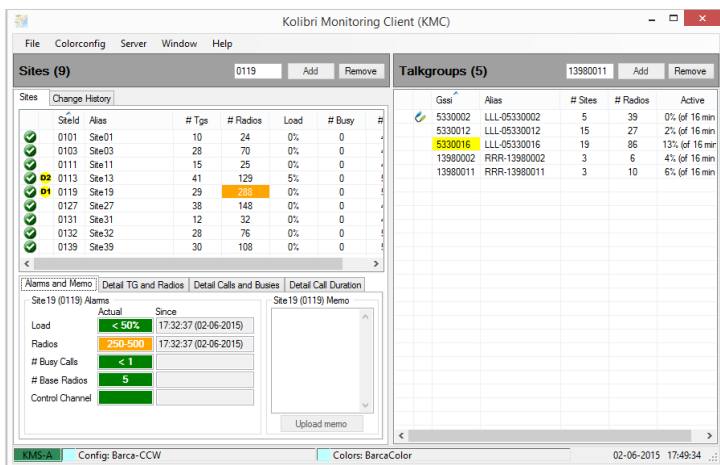
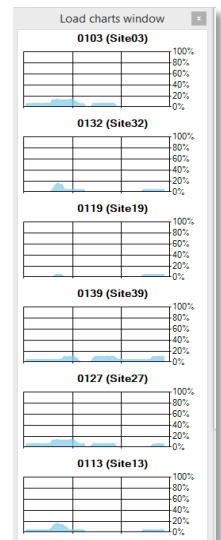
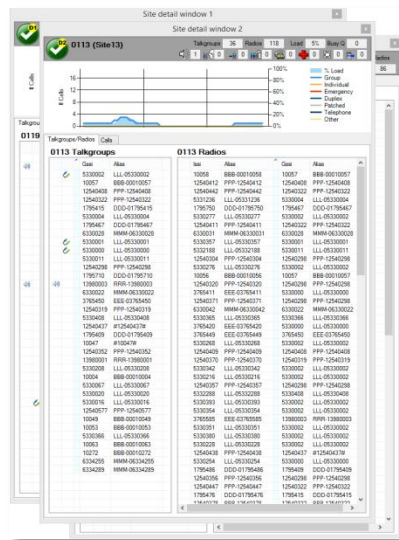
- ✓ Number of affiliated radios
- ✓ Number of talkgroups
- ✓ Actual load, actual no. of busies
- ✓ Information in historical charts.

### Real-time information of selected Talkgroups:

- ✓ Number of radios affiliated to this Talkgroup
- ✓ Number of sites involved
- ✓ Active time

## Detailed information per Site:

- ✓ List of affiliated Talkgroups
- ✓ Use of colour, including a colour indicating the expectation of a particular talkgroup on a site
- ✓ List of affiliated Radios
- ✓ Active calls
- ✓ Call history
- ✓ Patches



## Detailed information per Talkgroup:

- ✓ List of Sites on which the Talkgroup is affiliated,
- ✓ Whenever the Talkgroup is member of a Patch, the members of the Patch are displayed together with the author of the Patch.

**Available for:**



**MOTOROLA**



**DAMM**



**ROHILL**



**AIRBUS  
DEFENCE & SPACE**

## Optional Additional functionality:

- ✓ Text messages:
  - ✓ Send text message to Porto
  - ✓ Send text message to Talkgroup
  - ✓ Outbox (shared between all clients)