



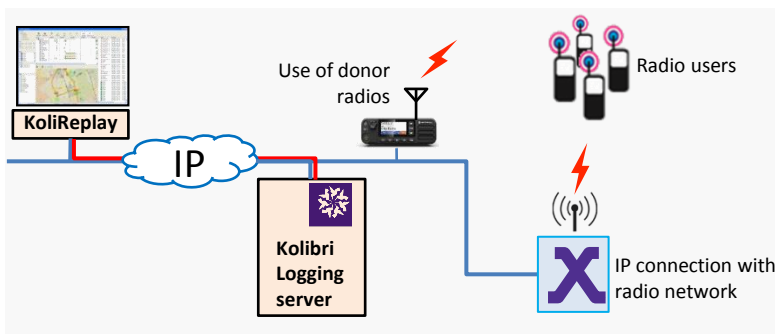
**kolibri  
systems**

# Kolibri Logging System

The Kolibri Logging System is part of the Kolibri Control Room suite. The versatile and modular Kolibri suite brings the strength of digital communication to your Control Room and improves efficiency and safety in your organisation.

## Stand alone or part of a Kolibri Control Room solution

The Kolibri Logging System can be deployed as a stand alone system or as part of a Kolibri Control Room solution. Because the Logging System is part of the Kolibri Control Room suite, the stand alone system can easily be expanded with other Kolibri Control Room functionalities.



## Voice, GPS and IPS

All information can be logged: voice, GPS positions information and if an IPS is in place, all indoor positions are also logged by the Kolibri Logging System.

## Radio network independent

The Kolibri Logging System is radio network independent. It can be used in combination with a single radio network or can be used to log information of several radio networks at the same time.

## KoliReplay

The Kolibri Logging System includes KoliReplay, the efficient tool to replay all logged information. Fully IP based, the Kolibri Logging System and the KoliReplay application can be located anywhere.

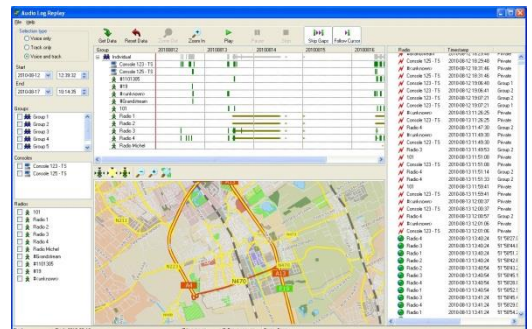
## Requirements

Kolibri runs on standard PC hardware with Windows OS. The hard disk size determines the log capacity.

**Interested?** For sales information or support, contact your local Kolibri dealer or contact Kolibri Systems directly.

## Features

- Supports TETRA, DMR, NXDN and Analogue radio networks
- Radio network independent solution
- Available with IP wired and/or radio based solutions
- Logs all types of calls:
  - Group calls
  - Private calls
  - Radio to Radio
- Data logging
  - Control signalling
  - Text messages
  - Radio location positions
  - Indoor tracking
- SIP support
- External interface support (SIPRec, Databases)



KoliReplay