

Kolibri applications:



**kolibri
systems**



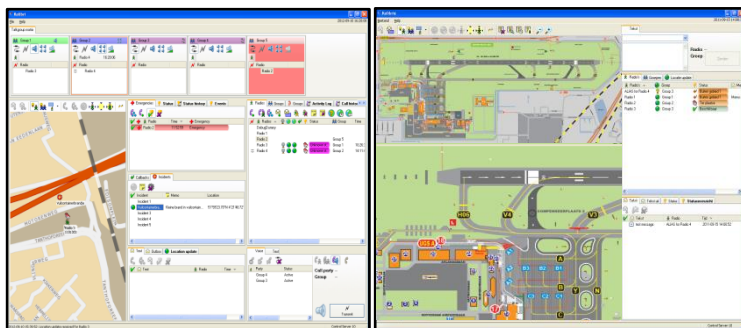
SAFETY Increasing efficiency **AVL / Track & Trace** **Redundancy**
 Control External Systems **WORK ORDER SYSTEM** **Logging & Replay**
Work flow management **Simultaneous Control of Radio Networks** **Paging**
Telephony **Map overview** **Automation of procedures**

Air Traffic Control, Flight Operations, Platform Operations, Air Crew, Baggage Handling, Check-in Services and Security Services

Airports are busy places where many people work in hazardous areas. Safety and security is of utmost importance, whether it is on the platform, in the passenger areas or at baggage handling.

The Kolibri solution integrates all those communication needs into one system. With the modular setup and with endless integration possibilities, Kolibri can be configured to the needs of each individual airport.

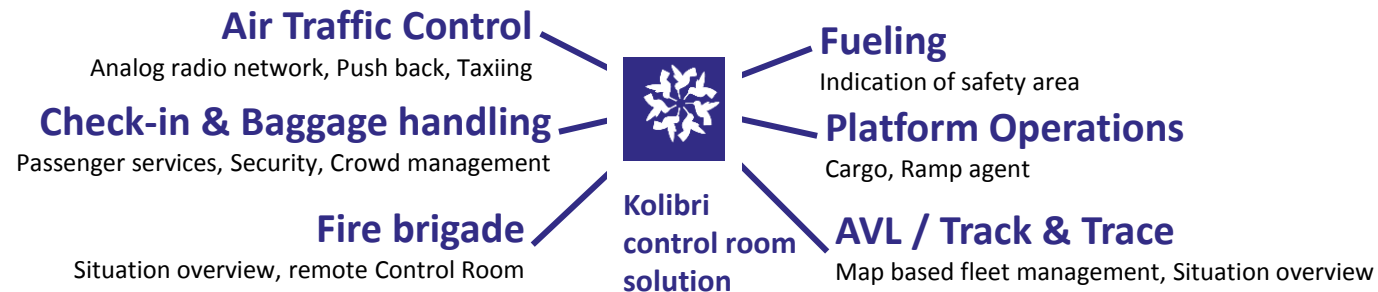
As an example: integrating a Work Order system improves efficiency while Track & Trace provides an situational overview and quick control of your fleet.



An example of a Kolibri GUI configuration

References

Kolibri has delivered its advanced control room solution to several European Airports. Each Kolibri solution is customized to the specific requirements of the airport. The configurations include simultaneous control of TETRA and Analog radio networks, automated Runway intrusion security and Platform operations, connection to Paging and Telephony systems and integration with external information systems. All information is available in an organised GUI.



Requirements

Kolibri runs on standard PC hardware with Windows OS. Several ways of connection possibilities to the radio network.

Information requests

For sales information or support, contact your local Kolibri dealer or contact Kolibri Systems directly.