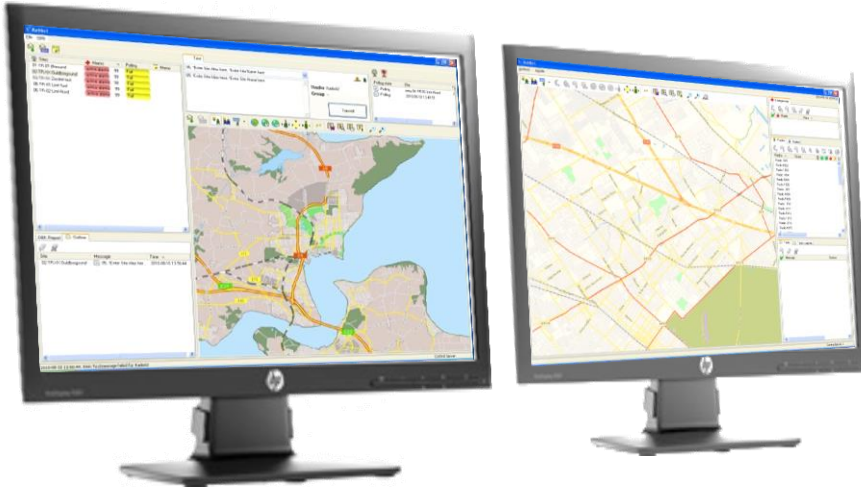




**kolibri
systems**



KoliTrack module



TRACK AND TRACE FUNCTIONALITY

KoliTrack monitors the geographical position of mobile devices equipped with GPS functionality. The tracking functionality allows control room operators to have an overview of the operating field and to react on events more quickly. The tracking functionality includes radio initiated and Kolibri initiated GPS data tracking and displaying the maps in multiple windows or screens. KoliTrack supports seamless outdoor and indoor localization. For indoor localization, KoliTrack interfaces with most well known manufactures of Indoor Position Systems.

CUSTOMER SPECIFIC SOLUTIONS

KoliTrack has many features as standard, such as Geofencing, Lone Worker and Guard Tours. But for those customers that have specific requirements and needs, (automatic) actions like alarm handling or an action enabled by clicking on a item such as a CCTV camera on the map can be implemented. With these possibilities, a KoliTrack solution can be fully integrated with the customers' work processes.

EXPANSION OPTIONS

With adding extra Kolibri modules to a KoliTrack solution the possibilities can be easily expanded. For instance, with a Voice Dispatch module added, a Kolibri Integrated solution is made and calls can be placed directly from the map. With the XML module, GPS data can be send to external applications.

FEATURES:

- ✓ Query & track positions
- ✓ Outdoor positioning (GPS)
- ✓ Indoor positioning
- ✓ Track history
- ✓ Messaging
- ✓ Lone Worker
- ✓ Guard Tours
- ✓ Items on map:
 - ✓ Tracked radios
 - ✓ Bluetooth devices
 - ✓ Fixed items (POI, sites, etc)
 - ✓ CCTV Cameras
- ✓ Map layers
- ✓ Geofencing
- ✓ Multiple map formats support
- ✓ Standard GUI and Custom GUI
- ✓ Different Operator profiles
- ✓ Multiple gateways available:
 - ✓ TETRA,
 - ✓ DMR,
 - ✓ LTE,
 - ✓ HTTP
 - ✓ I/O
- ✓ Integration with other applications

